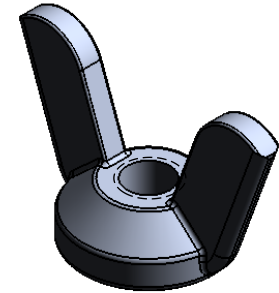
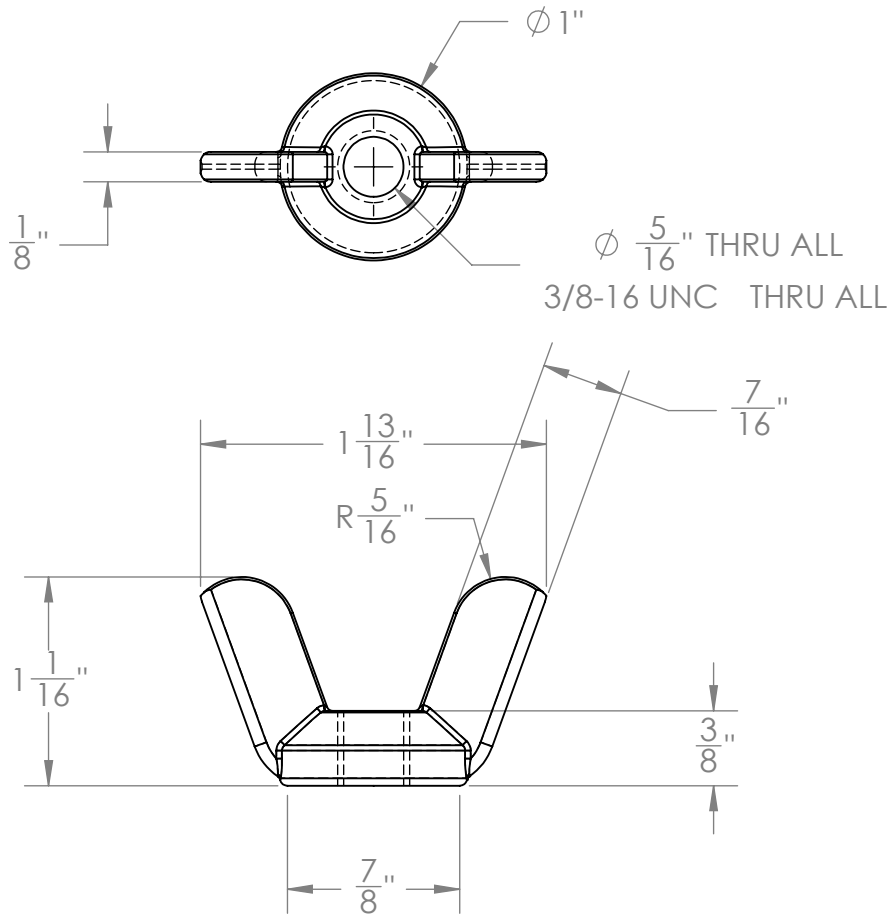


| PART NUMBER | Description | Material | Weight | Inventory | Location | Vendor |
|-------------|----------------------|----------|--------|-----------|----------|-------------------|
| 1000061 | WING NUT, 3/8-16 UNC | AISI 316 | 0.09 | Yes | VS1 | VERSA STEEL, INC. |



PROPRIETARY AND CONFIDENTIAL

THE INFORMATION CONTAINED IN THIS DRAWING IS THE SOLE PROPERTY OF VERSA-STEEL, INC. ANY REPRODUCTION IN PART OR AS A WHOLE WITHOUT THE WRITTEN PERMISSION OF VERSA-STEEL, INC. IS PROHIBITED.

DIMENSIONS ARE IN INCHES
TOLERANCES:

1/X $\pm \frac{1}{16}"$
.XX $\pm .01$
.XXX $\pm .003$
.XXXX $\pm .0005$

MATERIAL
AISI 316

FINISH
POLISHED

DO NOT SCALE DRAWING

| | NAME | DATE |
|-----------|------|------------|
| DRAWN | TAC | 2008-09-25 |
| CHECKED | | |
| ENG APPR. | | |
| MFG APPR. | | |
| Q.A. | | |
| COMMENTS: | | |

Versa-Steel, Inc
Portland, Oregon USA
Ph 503-287-9822

Description:
WING NUT, 3/8-16 UNC
Part Number: 1000061

| SIZE | DWG. NO. | REV. |
|------------|-------------------|--------------|
| A | 1 of 1 | A |
| SCALE: 1:1 | WEIGHT: 0.09 Lbs. | SHEET 1 OF 1 |

NOTE: (1) PART QUANTITIES: FOUND ON MAIN ASSEMBLY PARTS BOM (2) WHERE USED: FOUND ON MAIN ASSEMBLY INDENTED BOM (3) SUB ASSEMBLY QUANTITIES: FOUND ON ASSY BOM