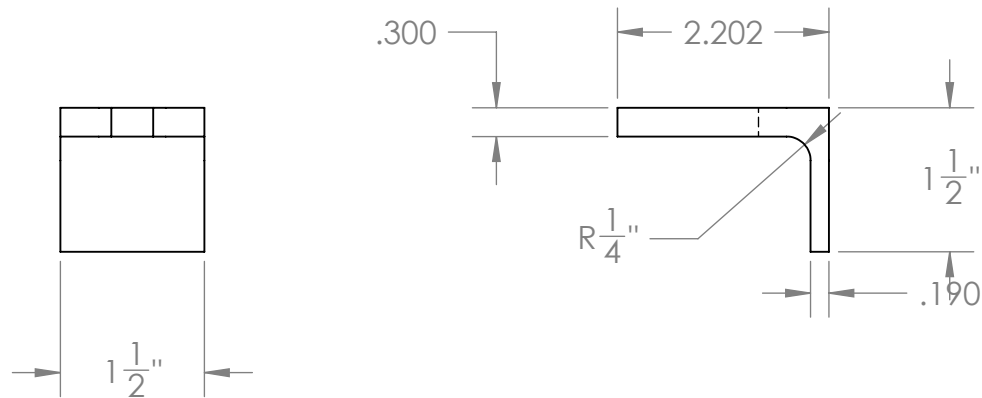
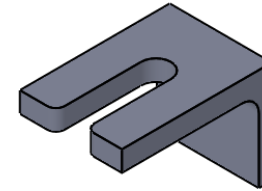
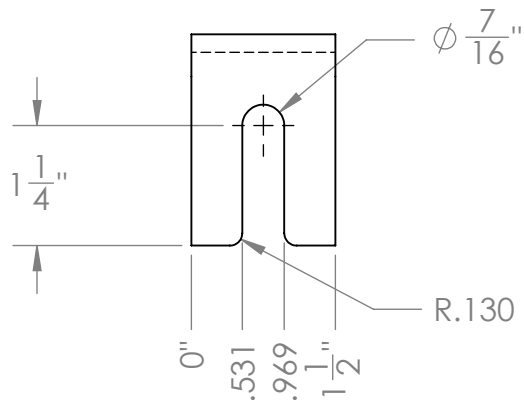


PART NUMBER	Description	Material	Weight	Inventory	Location	StockSize
1000041	BRACKET, LID HOLDDOWN	6061-T6	0.11	Yes	VS1	ANGLE 5/16" X 2 1/2" X 2 1/2" X 1 1/2" LG



**PROPRIETARY AND CONFIDENTIAL**

THE INFORMATION CONTAINED IN THIS DRAWING IS THE SOLE PROPERTY OF VERSA-STEEL, INC. ANY REPRODUCTION IN PART OR AS A WHOLE WITHOUT THE WRITTEN PERMISSION OF VERSA-STEEL, INC. IS PROHIBITED.

DIMENSIONS ARE IN INCHES  
TOLERANCES:

1/X  $\pm$  1/16"  
.XX  $\pm$  .01  
.XXX  $\pm$  .003  
.XXXX  $\pm$  .0005

MATERIAL  
**6061-T6**

FINISH

DO NOT SCALE DRAWING

	NAME	DATE
DRAWN	TAC	2008-09-25
CHECKED		
ENG APPR.		
MFG APPR.		
Q.A.		
COMMENTS:		

**Versa-Steel, Inc**  
Portland, Oregon USA  
Ph 503-287-9822

Description:  
**BRACKET, LID HOLDDOWN**  
Part Number: 1000041

SIZE <b>A</b>	DWG. NO.	1 of 1	REV. <b>A</b>
SCALE: 1:2	WEIGHT: 0.09 Lbs.	SHEET 1 OF 1	

**NOTE: (1) PART QUANTITIES: FOUND ON MAIN ASSEMBLY PARTS BOM (2) WHERE USED: FOUND ON MAIN ASSEMBLY INDENTED BOM (3) SUB ASSEMBLY QUANTITIES: FOUND ON ASSY BOM**