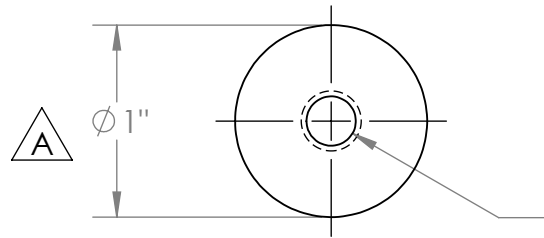
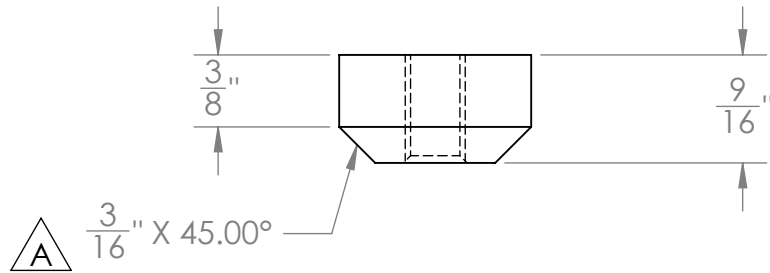
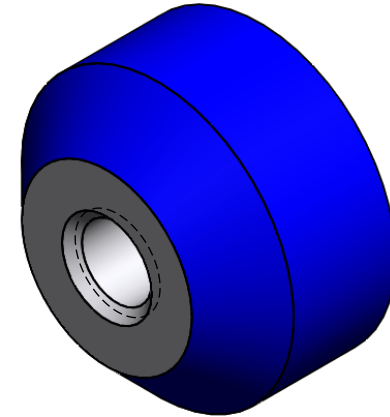


PART NUMBER	Description	Material	Weight	StockSize
1000062	MOUNTING BLOCK, GAS SPRING	6061-T6	0.04	ROUND 1" X 9/16" LG



$\phi \frac{1}{4}$ " THRU ALL
 5/16-18 UNC $\nabla \frac{5}{8}$ "
 $\checkmark \phi \frac{5}{16}$ " X 90°, NEAR SIDE
 REV-B



REVISIONS				
ZONE	REV.	DESCRIPTION	DATE	APPROVED
	A		9/25/2008	TAC

PROPRIETARY AND CONFIDENTIAL

THE INFORMATION CONTAINED IN THIS DRAWING IS THE SOLE PROPERTY OF VERSA-STEEL, INC. ANY REPRODUCTION IN PART OR AS A WHOLE WITHOUT THE WRITTEN PERMISSION OF VERSA-STEEL, INC. IS PROHIBITED.

DIMENSIONS ARE IN INCHES
TOLERANCES:

1/X $\pm \frac{1}{16}$ "
 .XX $\pm .01$
 .XXX $\pm .003$
 .XXXX $\pm .0005$

MATERIAL
6061-T6

FINISH
MILL

DO NOT SCALE DRAWING

	NAME	DATE
DRAWN	TAC	2008-11-21
CHECKED		
ENG APPR.		
MFG APPR.		
Q.A.		

COMMENTS:

Versa-Steel, Inc
 Portland, Oregon USA
 Ph 503-287-9822

Description:
 MOUNTING BLOCK, GAS SPRING
 Part Number: 1000062

SIZE	DWG. NO.	REV.
A	1 of 1	B
SCALE: 1:1	WEIGHT: 0.04 Lbs.	SHEET 1 OF 1

NOTE: (1) PART QUANTITIES: FOUND ON MAIN ASSEMBLY PARTS BOM (2) WHERE USED: FOUND ON MAIN ASSEMBLY INDENTED BOM (3) SUB ASSEMBLY QUANTITIES: FOUND ON ASSY BOM