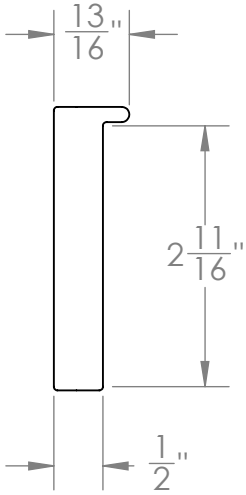
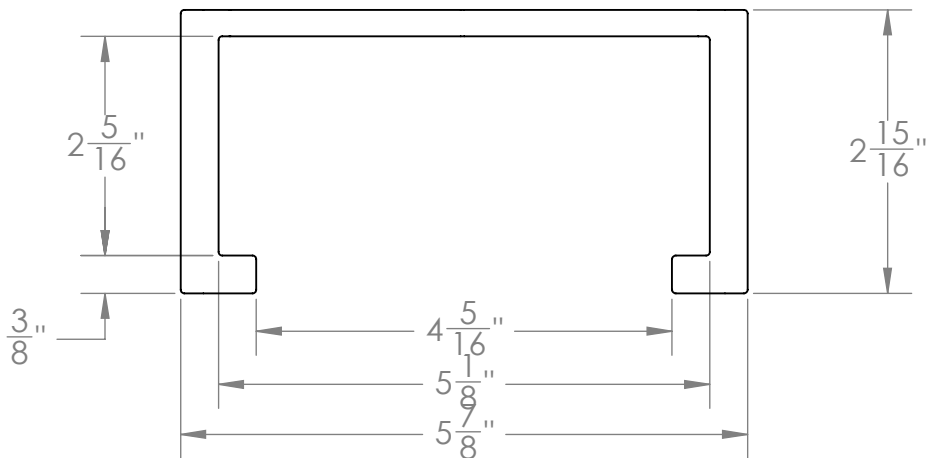
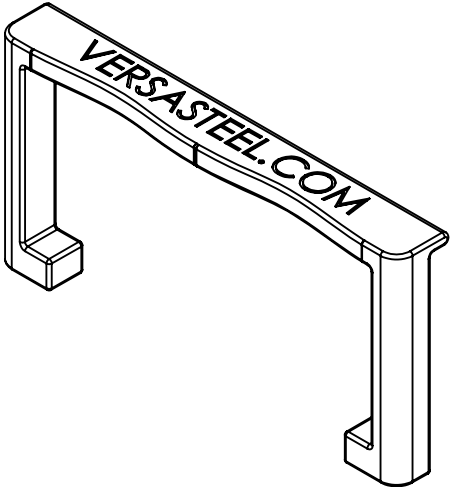


PART NUMBER	Description	Material	Weight	Vendor	Was
1000102	H SERIES HATCH PULL HANDLE	AISI 316	0.62		VS 501-629

VERSASTEEL.COM



DIMENSIONS ARE IN INCHES TOLERANCES:		
1/X	±	1/16"
.XX	±	.01
.XXX	±	.003
.XXXX	±	.0005
MATERIAL	NAME	DATE
AISI 316	TAC	2008-11-11
FINISH	CHECKED	
BEAD BLAST	ENG APPR.	
DO NOT SCALE DRAWING	MFG APPR.	
	Q.A.	
	COMMENTS:	

PROPRIETARY AND CONFIDENTIAL

THE INFORMATION CONTAINED IN THIS DRAWING IS THE SOLE PROPERTY OF VERSA-STEEL, INC. ANY REPRODUCTION IN PART OR AS A WHOLE WITHOUT THE WRITTEN PERMISSION OF VERSA-STEEL, INC. IS PROHIBITED.

Versa-Steel, Inc
Portland, Oregon USA
Ph 503-287-9822

Description:
H SERIES HATCH PULL HANDLE
Part Number: 1000102

SIZE A	DWG. NO. 1 of 1	REV. A
SCALE: 1:2	WEIGHT: 0.62 Lbs.	SHEET 1 OF 1

NOTE: (1) PART QUANTITIES: FOUND ON MAIN ASSEMBLY PARTS BOM (2) WHERE USED: FOUND ON MAIN ASSEMBLY INDENTED BOM (3) SUB ASSEMBLY QUANTITIES: FOUND ON ASSY BOM