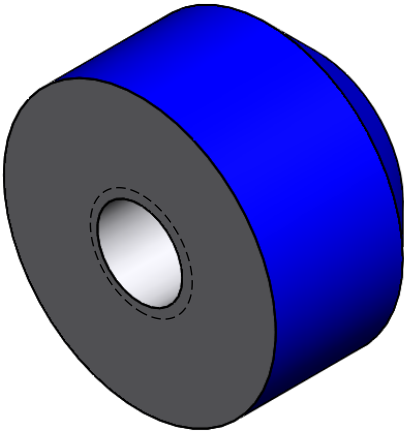
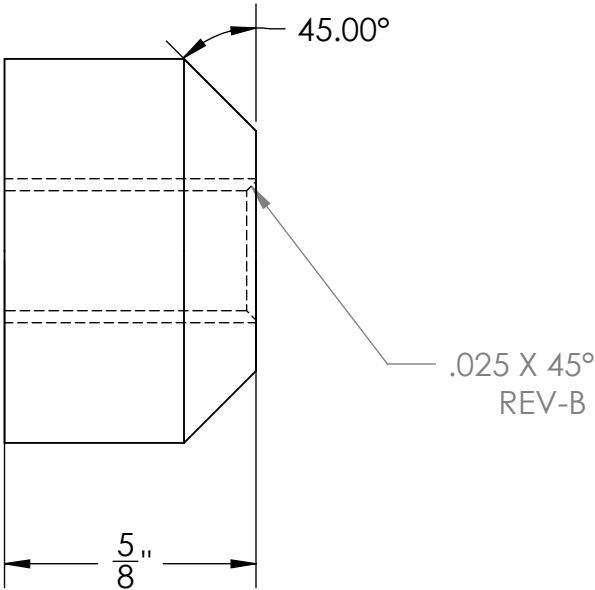
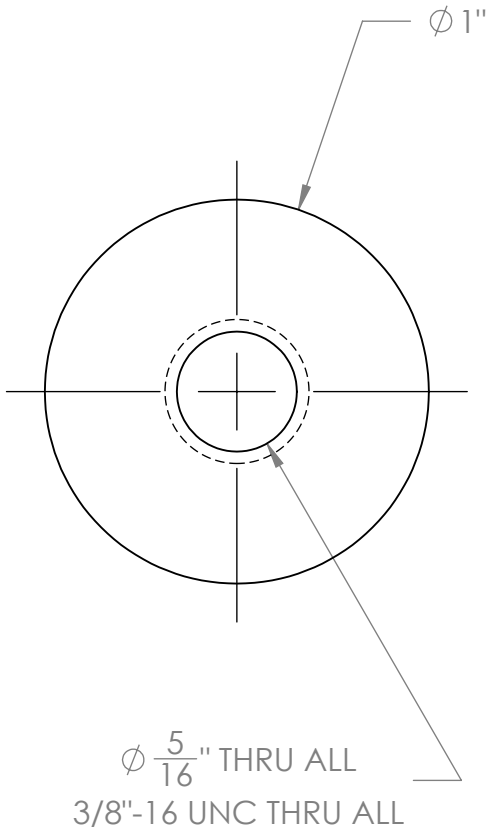


ITEM NO.	PART NUMBER	DESCRIPTION	QTY.
1	1000534	MOUNTING BLOCK HOLD OPEN ARM	1



PROPRIETARY AND CONFIDENTIAL

THE INFORMATION CONTAINED IN THIS
DRAWING IS THE SOLE PROPERTY OF
VERSA-STEEL, INC. ANY
REPRODUCTION IN PART OR AS A WHOLE
WITHOUT THE WRITTEN PERMISSION OF
VERSA-STEEL, INC. IS PROHIBITED.

DIMENSIONS ARE IN INCHES TOLERANCES:		NAME	DATE	Versa-Steel, Inc Portland, Oregon USA Ph 503-287-9822		
1/X ± 1/16"		DRAWN	BM			2009-07-24
.XX ± .01		CHECKED				
.XXX ± .003		ENG APPR.				
.XXXX ± .0005		MFG APPR.				
MATERIAL	6061-T6	Q.A.		Description: MOUNTING BLOCK HOLD OPEN ARM Part Number: 1000534		
FINISH	MILL	COMMENTS:				
DO NOT SCALE DRAWING				SIZE A	DWG. NO. 1 of 1	REV. B
				SCALE: 2:1	WEIGHT: 0.04 Lbs.	SHEET 1 OF 1

NOTE: (1) PART QUANTITIES: FOUND ON MAIN ASSEMBLY PARTS BOM (2) WHERE USED: FOUND ON MAIN ASSEMBLY INDENTED BOM (3) SUB ASSEMBLY QUANTITIES: FOUND ON ASSY BOM