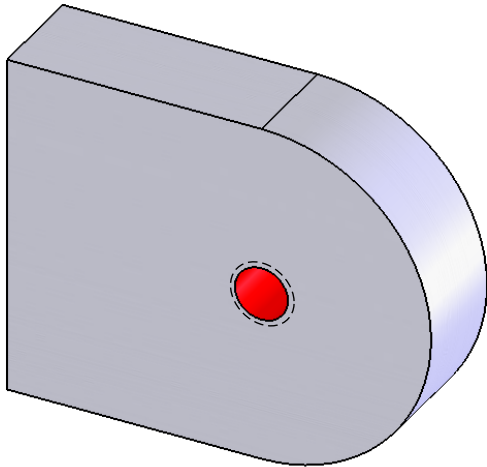
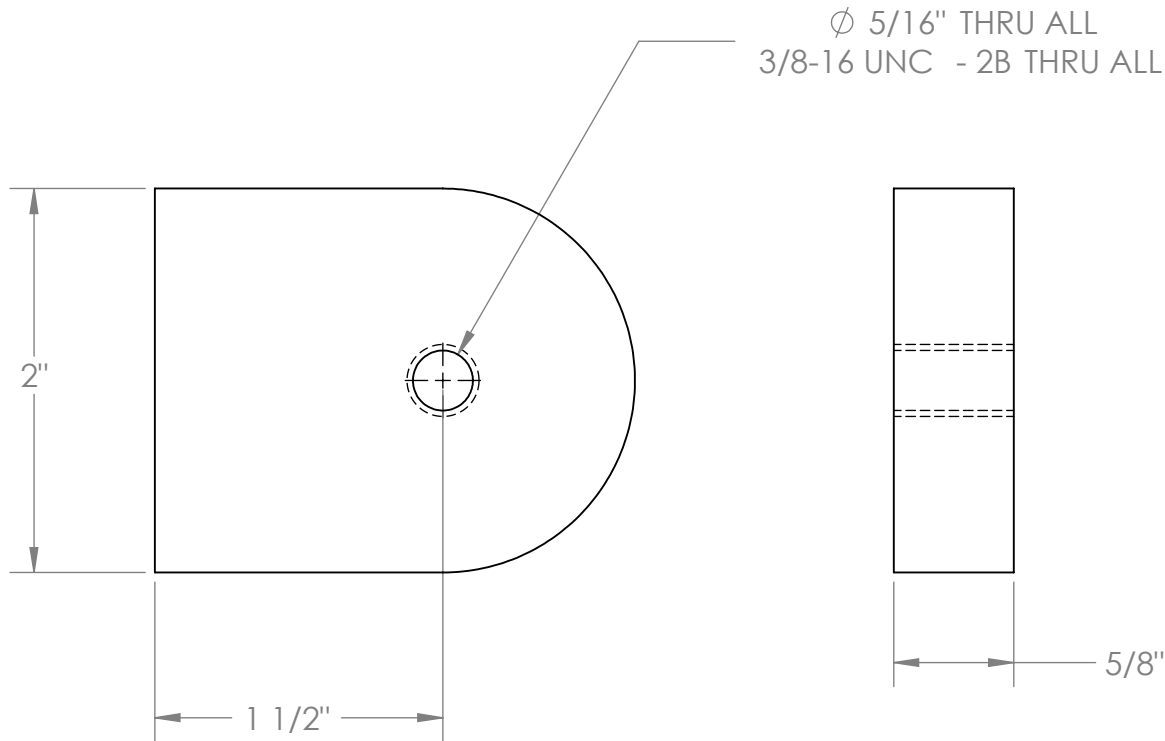


| PART NUMBER | DESCRIPTION                     | MATERIAL  | WEIGHT | INVENTORY | VENDOR |
|-------------|---------------------------------|-----------|--------|-----------|--------|
| 1000596     | BRACKET, LOCKING ARM, WATER JET | 5/8" 6061 | 0.27   |           |        |



|  |   |           |           |                    |  |  |
|--|---|-----------|-----------|--------------------|--|--|
| <div>PROPRIETARY AND CONFIDENTIAL</div> <div>THE INFORMATION CONTAINED IN THIS DRAWING IS THE SOLE PROPERTY OF VERSA-STEEL, INC. ANY REPRODUCTION IN PART OR AS A WHOLE WITHOUT THE WRITTEN PERMISSION OF VERSA-STEEL, INC. IS PROHIBITED.</div> | DIMENSIONS ARE IN INCHES<br>TOLERANCES:<br><br>X.XX ± 0.020"<br>X.XXX ±0.005" |           | NAME      | DATE               | Versa-Steel, Inc<br>Portland, Oregon USA<br>Ph 503-287-9822                |  |
|  | UNLESS NOTED  | DRAWN     | BM        | 2010-3-09          |  |  |
|  |   | CHECKED   |           |                    |  |  |
|  |   | ENG APPR. |           |                    |  |  |
|  |   | MFG APPR. |           |                    |  |  |
|  | MATERIAL<br>5/8" 6061   | Q.A.      |           |                    | Description: BRACKET, LOCKING ARM,<br>WATER JET<br>Part Number: 1000596-WJ |  |
|  | FINISH  | COMMENTS: |           |                    |  |  |
| DO NOT SCALE DRAWING   |   |           | SIZE<br>A | DWG. NO.<br>1 of 1 | REV.<br>A  |  |
|  |   | SCALE:1:1 |           | WEIGHT: 0.27 LBS   | SHEET 1 OF 1   |  |