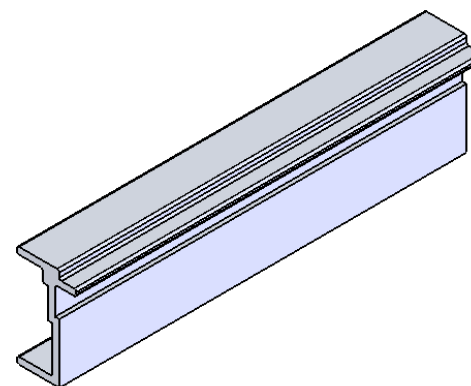
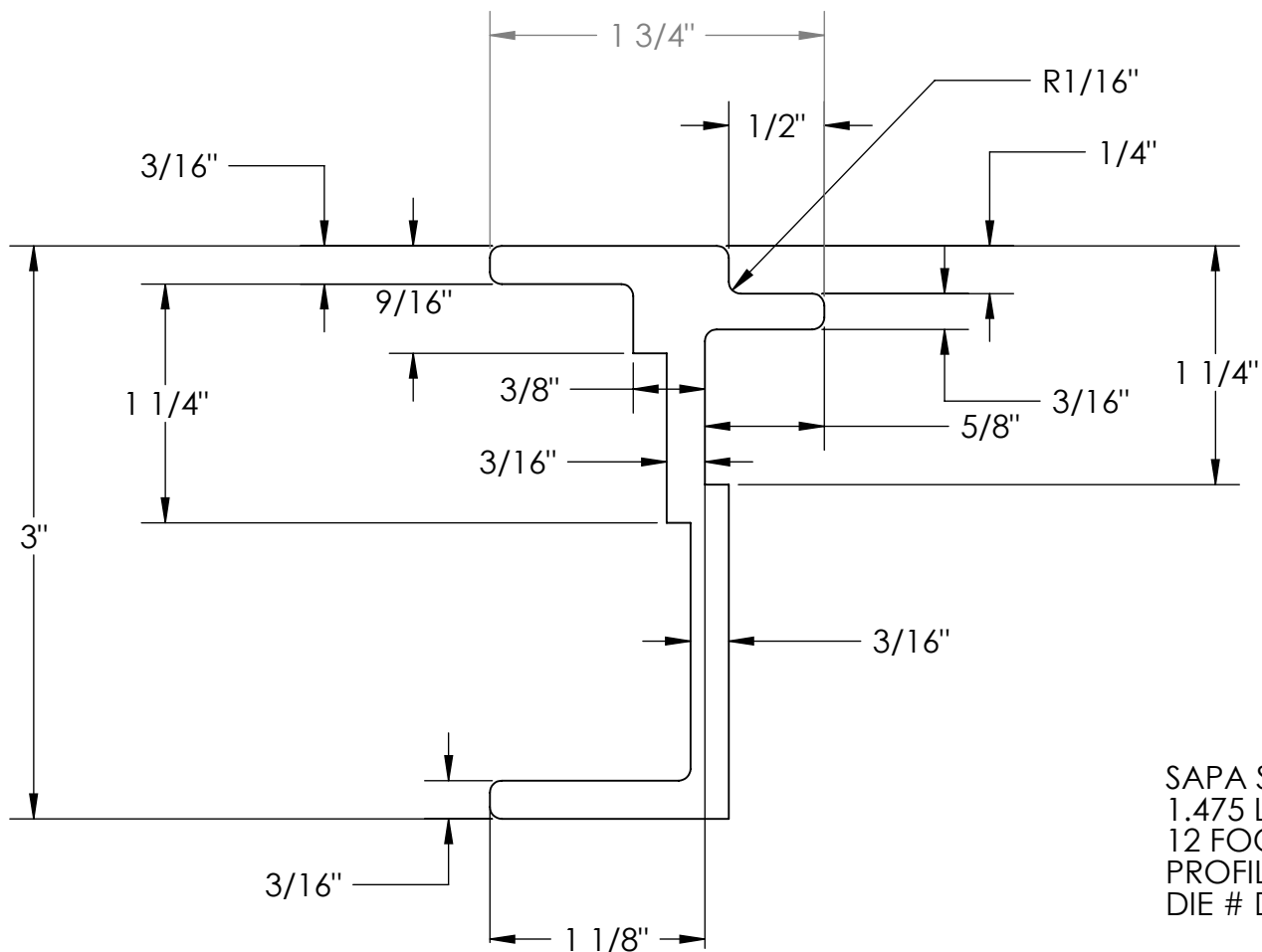


PART NUMBER	DESCRIPTION	MATERIAL	WEIGHT	VENDOR NUMBER	VENDOR
1000835	EXTRUSION STOCK	6061-T6	1.4748	042157	

PER FOOT



SAPA SPECS:
1.475 LBS PER FOOT
12 FOOT BARS CC1 CLEAR CLASS 1
PROFILE # 042157
DIE # DIE-042157

INCHES

PROPRIETARY AND CONFIDENTIAL

THE INFORMATION CONTAINED IN THIS DRAWING IS THE SOLE PROPERTY OF VERSA-STEEL, INC. ANY REPRODUCTION IN PART OR AS A WHOLE WITHOUT THE WRITTEN PERMISSION OF VERSA-STEEL, INC. IS PROHIBITED.

DIMENSIONS ARE IN INCHES
TOLERANCES:

X.XX ± 0.020"
X.XXX ± 0.005"

UNLESS NOTED

MATERIAL
6061-T6

FINISH

DO NOT SCALE DRAWING

	NAME	DATE
DRAWN	E. BAILIFF	2010-7-27
CHECKED		
ENG APPR.		
MFG APPR.		
Q.A.		

COMMENTS:

Versa-Steel, Inc
Portland, Oregon USA
Ph 503-287-9822

Description: EXTRUSION STOCK

Part Number: 1000835

SIZE	DWG. NO.	REV.
A	1 of 1	C

SCALE:1:1

WEIGHT: 1.4748 LBS

SHEET 1 OF 2