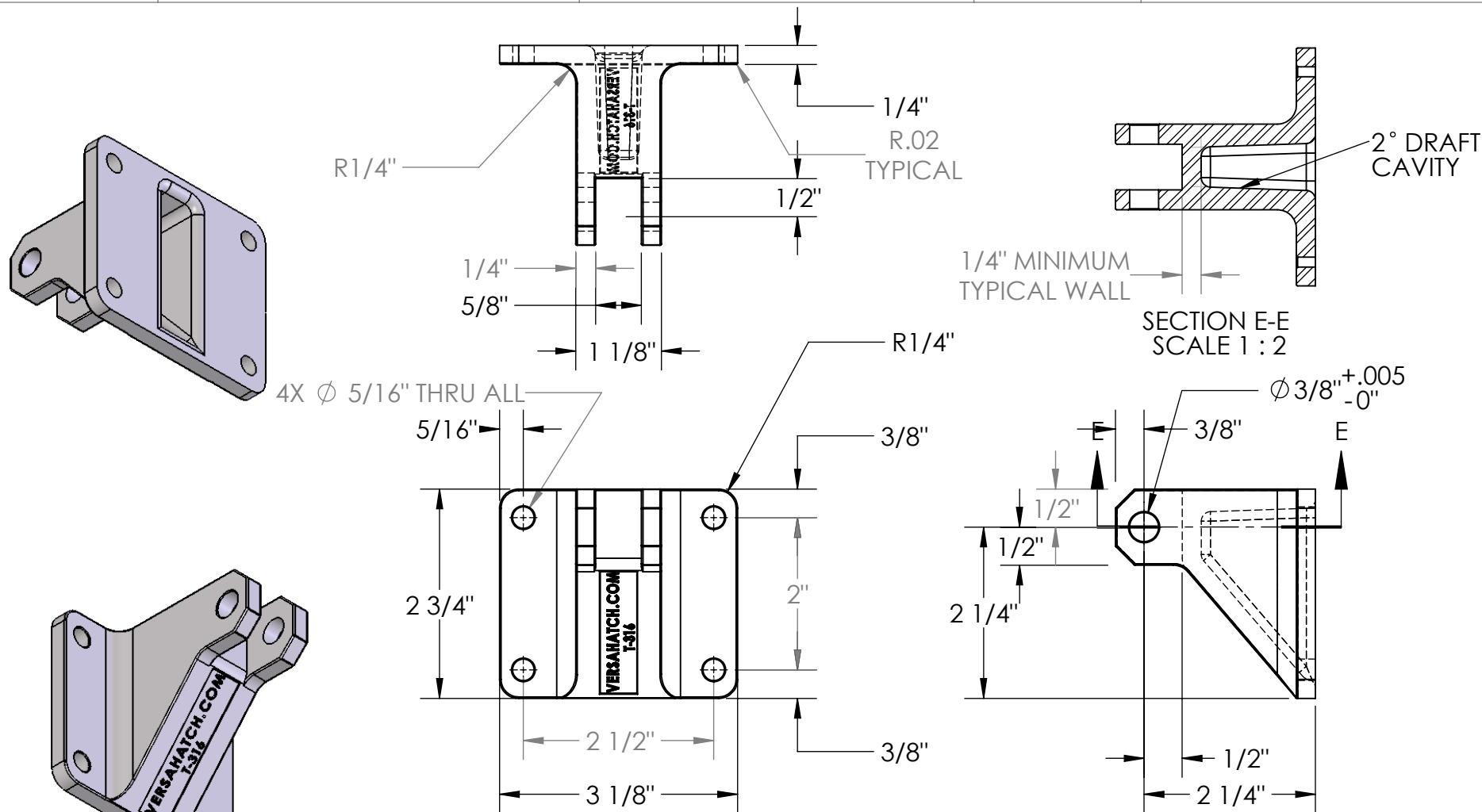


PART NUMBER	DESCRIPTION	MATERIAL	WEIGHT	STOCK SIZE
1000973	CAST MOUNT, GAS SPRING	T-316 CAST	1.3	



<div>PROPRIETARY AND CONFIDENTIAL</div> <div>THE INFORMATION CONTAINED IN THIS DRAWING IS THE SOLE PROPERTY OF VERSA-STEEL, INC. ANY REPRODUCTION IN PART OR AS A WHOLE WITHOUT THE WRITTEN PERMISSION OF VERSA-STEEL, INC. IS PROHIBITED.</div>	<div>DIMENSIONS ARE IN INCHES TOLERANCES: X.XX ± 0.020" X.XXX ±0.005"</div>		<div>NAME</div>	<div>DATE</div>	<div>Versa-Steel, Inc Portland, Oregon USA Ph 503-287-9822</div>		
		<div>DRAWN</div>	<div>NAME</div>	<div>DATE</div>			
		<div>CHECKED</div>			<div>Description: CAST MOUNT, GAS SPRING Part Number: 1000973</div> <div><div><div>SIZE A</div><div>DWG. NO. 1000973</div><div>REV A</div></div><div><div>SCALE:1:1</div><div>WEIGHT: 1.3 LBS</div><div>SHEET 1 OF 1</div></div></div>		
		<div>ENG APPR.</div>					
		<div>MFG APPR.</div>					
		<div>Q.A.</div>					
		<div>COMMENTS:</div>					
<div>MATERIAL T-316 CAST</div>							
<div>FINISH</div>							
<div>DO NOT SCALE DRAWING</div>							