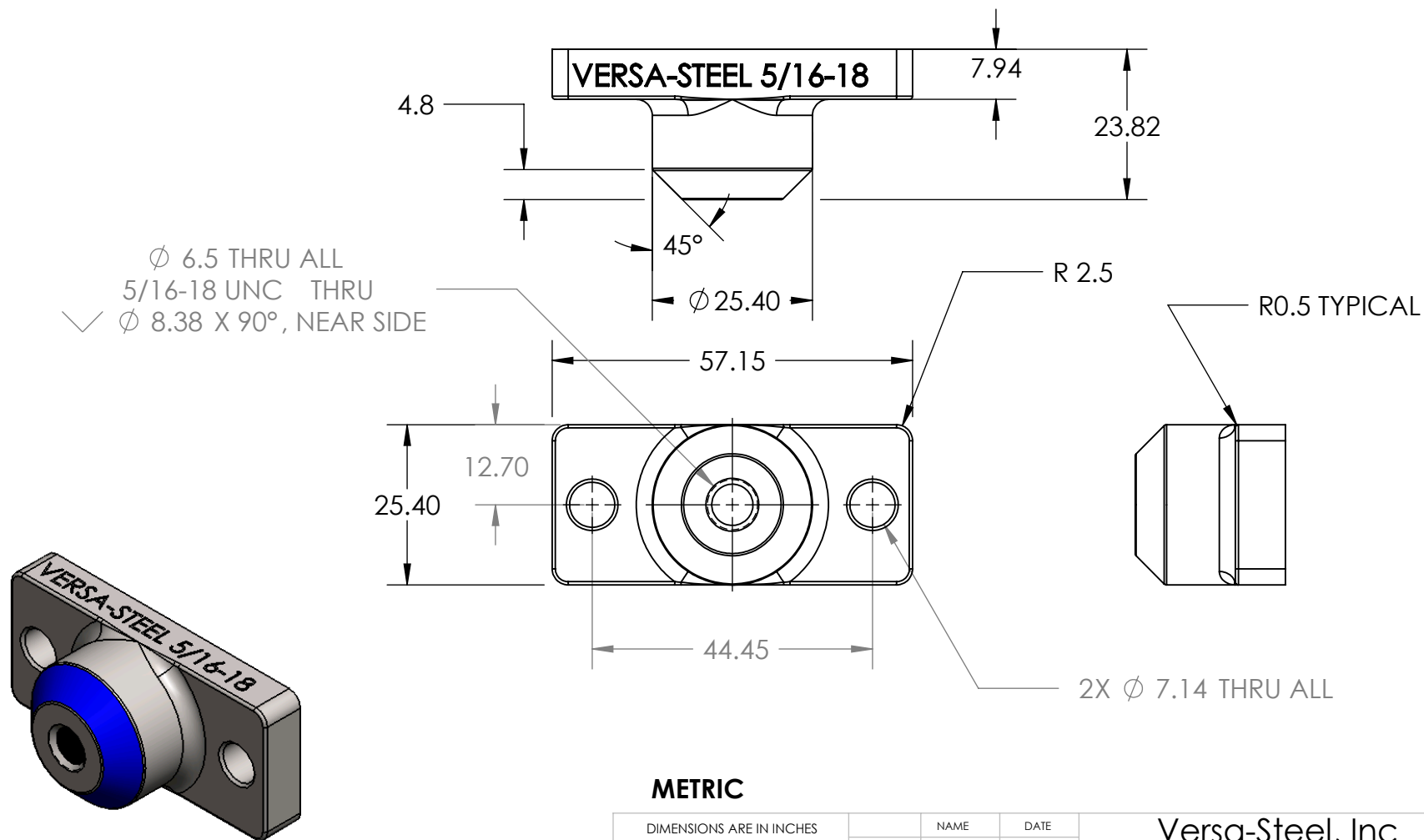


PART NUMBER	DESCRIPTION	MATERIAL	WEIGHT	STOCK SIZE
1001295	MOUNT, GAS SPRING, 5/16-18	T-316	0.31	CAST



METRIC

DIMENSIONS ARE IN INCHES
TOLERANCES:

X.XX ± 0.020"
X.XXX ± 0.005"

UNLESS NOTED

MATERIAL
T-316

FINISH
POLISH

DO NOT SCALE DRAWING

	NAME	DATE
DRAWN	E.BAILIFF	2012-11-1
CHECKED		
ENG APPR.		
MFG APPR.		
Q.A.		

COMMENTS:

Versa-Steel, Inc
Portland, Oregon USA
Ph 503-287-9822

Description: MOUNT, GAS SPRING,
5/16-18
Part Number: 1001295

SIZE	DWG. NO.	REV.
A	1001295	A
SCALE:1:2	WEIGHT: 0.31 LBS	SHEET 1 OF 1

PROPRIETARY AND CONFIDENTIAL

THE INFORMATION CONTAINED IN THIS
DRAWING IS THE SOLE PROPERTY OF
VERSA-STEEL, INC. ANY
REPRODUCTION IN PART OR AS A WHOLE
WITHOUT THE WRITTEN PERMISSION OF
VERSA-STEEL, INC. IS PROHIBITED.